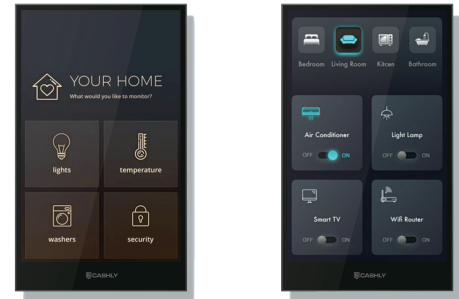


Description

The JSL-A8 multifunctional communicator is a premium Linux-based indoor touch screen device, designed for seamless audio and video communication with door phones via the SIP protocol. Featuring an 8-inch capacitive touch screen, elegant ultra-clear design, and robust network compatibility, it integrates perfectly into SIP-enabled PBX systems. With PoE or external power options, flexible mounting, and advanced management features, the JSL-A8 offers a high-end, user-friendly communication experience for modern smart homes and commercial buildings.



Main Features

- 8-inch capacitive touch screen with 800 × 1280 resolution and energy-saving mode
- Two-way audio communication with other network units
- SIP protocol compliant for easy integration into SIP-enabled PBX systems
- Stylish and modern design suitable for residential and commercial interiors
- Multiple power options: PoE (802.3af) or 12V DC external supply
- Flexible installation: wall-mounted or desktop setup
- Built-in Wi-Fi supporting IEEE 802.11 b/g/n/ax @ 2.4GHz
- European electrical wall box mounting support for easy deployment

Display

Type	8" TFT LCD, Normally White, Transmissive
Resolution	800 × 1280
Touch Screen	Projected Capacitive
Contrast Ratio	800:1
Luminance	250 cd/m²
Viewing Angle	85° (Left/Right/Up/Down)

Audio

Microphone	-42dB
Speaker	8Ω / 1W
Audio Codecs	G.711a, G.711μ, G.729, G.722
DTMF	Out-of-Band (RFC2833), SIP Info
Echo Cancellation	Supported

System & Performance

Operating System	Linux
RAM / ROM	128MB / 128MB
Protocols	IPv4, HTTP, HTTPS, FTP, SNMP, DNS, NTP, RTSP, RTP, TCP, UDP, ICMP, DHCP, ARP
Function	Auto-Provisioning & Web Management Portal Firmware Upgrade & Configuration Backup / Restore System Logs (including door access logs)

Network

Ethernet	2 × RJ45, 10/100Mbps adaptive
Wi-Fi	IEEE 802.11 b/g/n/ax @ 2.4GHz
SIP Protocols	SIP V1 (RFC2543), SIP V2 (RFC3261)

Interfaces

RS485 Port	Supported
Relay Out	1
Bell In	1
I/O Ports	8

Power

Power Supply	PoE (IEEE 802.3af) or 12V DC
Power Consumption	Low energy mode supported

Installation

Mounting Options	Wall-mounted / Desktop
Front Panel Material	Plastic
Dimensions	120.9 × 201.2 × 13.8 mm

Environmental

Working Temperature	-10°C - +55°C
Storage Temperature	-20°C - +70°C
Working Humidity	10% - 93%