



Model DS7300H

Speed Gate High Glass

The DS7300H is the most classic speed gate. Its full stainless-steel design makes it a timeless and classic choice.

The passing width can reach to 600mm for normal passage, and can support 1200mm for wide passageway, wheelchair, and pedestrian with large luggage can also pass, support 900mm to 1800mm glass height for higher security.

Outstanding feature: 0.1s fast open and close speed, 55 people support to pass per minute which is usually used in high pedestrian traffic flow in both directions.

Features

- Two way or one way working.
- Support integrated with any type of access control systems.
- 0.1S fast open speed, 55 person/min high throughput.
- 120mm brushed stainless steel slim cabinet.
- Tempered glass swipe window, hard to be scratched.
- Lower power consumption.
- Low noise, system runs smoothly.
- Blue, green and red LED indicator display passing status.
- Indoor/outdoor use(shelter).
- Fire safety requirements, arms open automatically.
- Easy to install and maintain.
- 3 years warranty support.

Customized Service

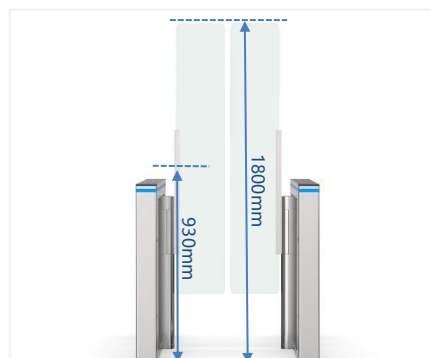
- Appearance color can be customized based on installation environment.
- Dimensions can be customized to meet your request.
- Logo can be customized.
- Arm glass width and height are optional.
- Infrared sensor number optional.
- Waterproof optional.
- Picture: high resolution and scene picture can be customized.

Functions

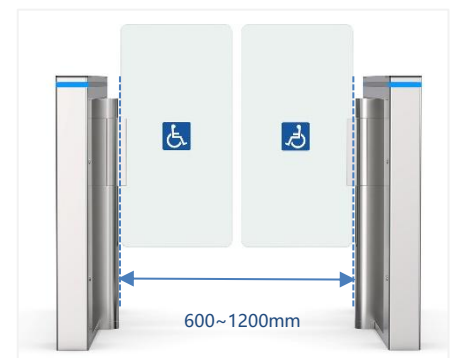
- **Infrared sensor alarm function:**
in case of illegal intrusion and reverse intrusion.
- **Anti-intrusion function:**
the gate is locked automatically until valid opening signal input.
- **Anti-reverse function:**
the turnstile alarms if someone wants to entry in the reverse direction.
- **Anti-trailing function:**
the speed gate alarms if someone wants to burst in without permission.
- **Anti-collision and anti-kick function:**
it designed with consolidated and more durable mechanism, will not break even someone collide it.
- **Mechanism self-protection:**
the arm will reset automatically if off position. The movement will not be broken or damaged even hit.



Logo Custom



High Glass Optional



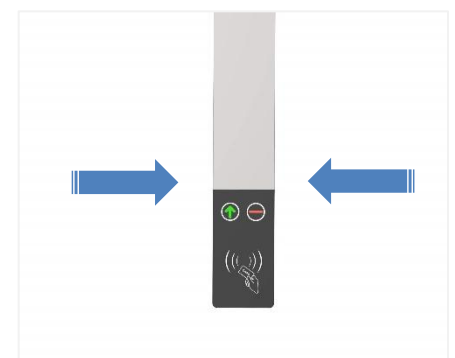
Wide Lane Optional



Anti-kick Function



Infrared Sensors in the
Line of Black Area



120mm Slim Cabinet

Access Control System

Daosafe turnstile gates can be well integrated with any 3rd party access control systems



Card Solution



QR/Bar Code Solution



Biometric Solution



Remote Control



Touchless Button



Card



QR Code



Fingerprint

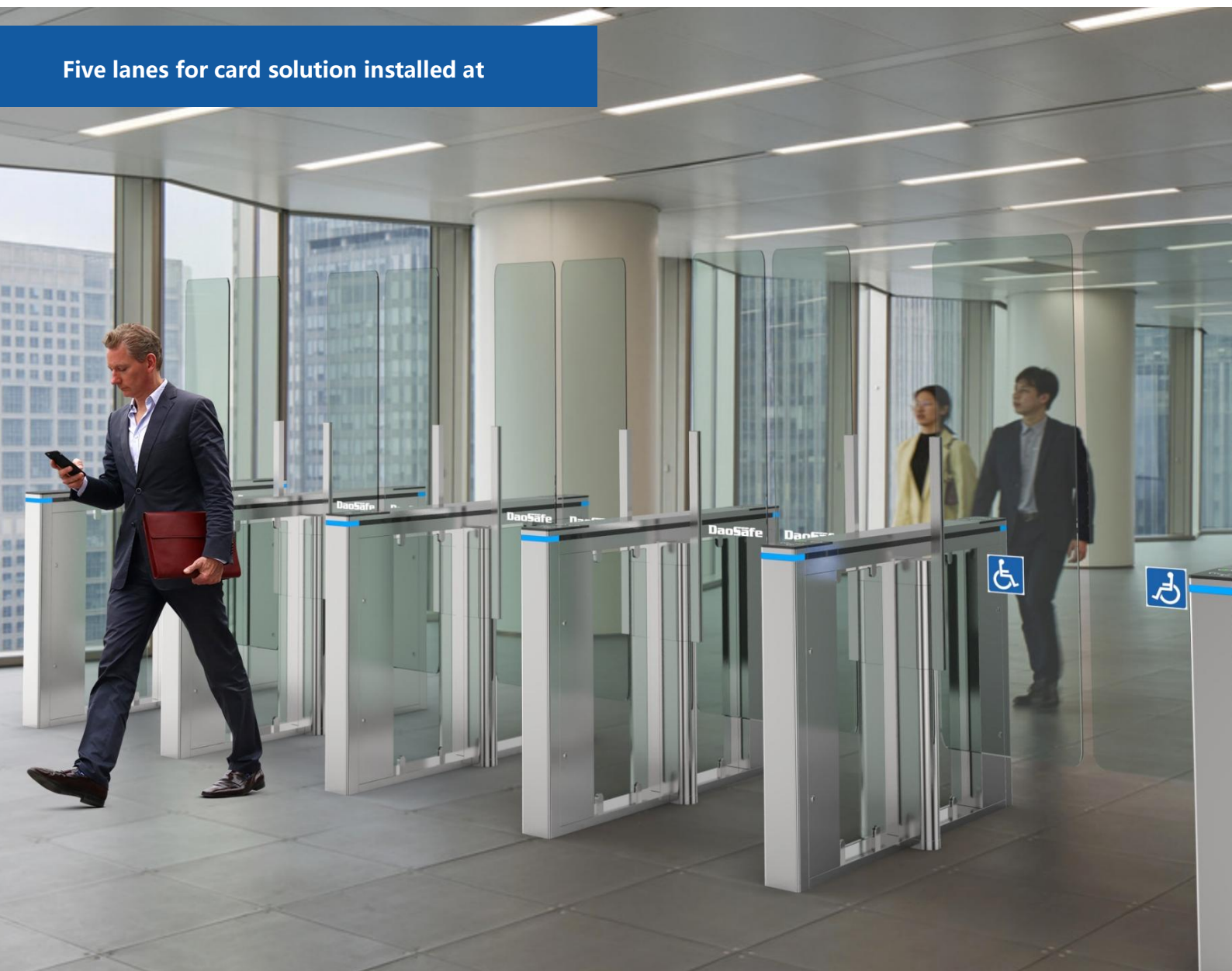


Face



Palm Vein

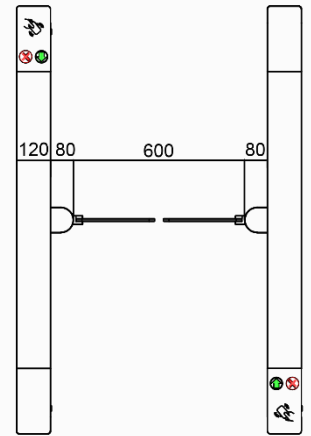
Five lanes for card solution installed at



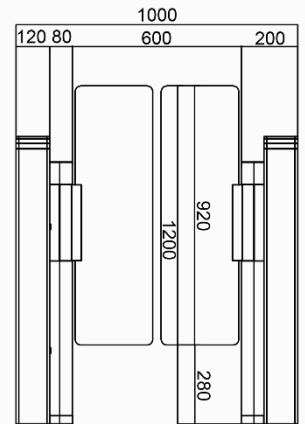
Specifications

Model No.	DS7300H
Type	Speed Gate High Glass
Brand	Daosafe
Framework Material	304 Stainless Steel
Arm material	Plexiglas-transparency or glass
Dimension	1500 * 120 * 1020mm
Net Weight	80kg/pcs (single core), 100kg/pcs (double core)
Passage Width	600mm (standard), 900mm max. (handicap)
Arm Height	930mm (standard), 1800mm max. (optional)
Passing Direction	Single directional / Bi-directional
MCBF	20 million
Power Supply	AC220V/110V, 50/60Hz
Operation Voltage	24V DC
Power Consumption	40W
Operation Temperature	-30 °C - 75 °C
Operation Humidity	0 ~ 95% (No freeze)
Working Environment	Indoor / Outdoor (shelter)
Flow Rate	55 people per minute for standard arm 35 people per minute for high arm
LED Indicator	LED indicators at top: green → entry, red × no entry
Infrared Sensor	6 pairs (standard)
Emergency	Automatic arm open when power off
Communication	Dry contact, Relay signal, RS485
Flexibility	Integrate with any access control

Top View



Front View



Side View

