



Model DSSP6004B

Pedestrian Security Gate (electric lock)

The DSSP6004B full-height pedestrian security gate is designed for individual operation or to integrate with a full-height turnstile for access control. It features a standard relay signal for compatibility with various third-party access control systems. This setup is a common and ideal solution for managing access for package deliveries, carts, handicapped individuals, and similar needs.

Features

- The direction of door opening: two-way.
- 304 brushed stainless steel, durable and antirust.
- Support integrated with any type of access control systems.
- IP65 waterproof level, indoor/outdoor use.
- Fire safety requirements, arms open automatically.
- Easy to install and maintain.
- 3 years warranty support.

Customized Service

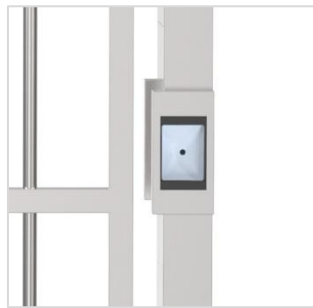
- Material optional.
- Appearance color can be customized based on installation environment.
- Dimensions can be customized to meet your request.
- Logo can be customized.
- Picture: high resolution and scene picture can be customized

Access Control System

Daosafe turnstile gates can be well integrated with any 3rd party access control systems



Card Solution



QR/Bar Code Solution



Remote Control



Touchless Button



Fingerprint



Face



Palm Vein

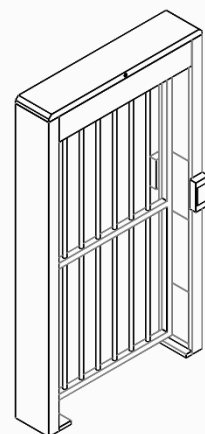


Specifications

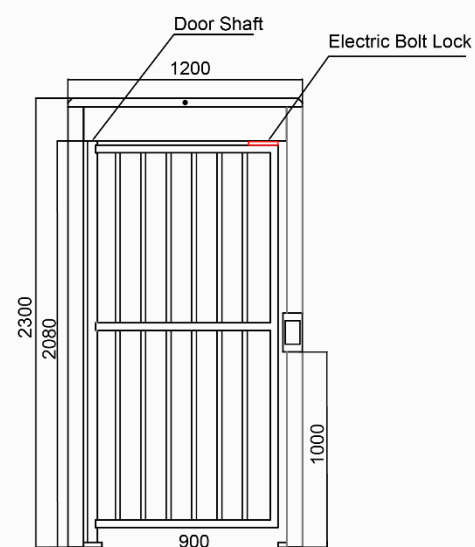
Model No.	DSSP6004B
Type	Electric lock
Brand	Daosafe
Framework Material	304 Stainless Steel
Dimension	1200 * 260 * 2300mm
Inner Height	2080mm
Net Weight	60kg/pcs
Passage Width	900mm
Passing Direction	Single directional / Bi-directional
Direction of Door Open	Two ways
MCBF	10 million
Power Supply	AC220V/110V, 50/60Hz
Operation Voltage	24V DC
Power Consumption	40W
Operation Temperature	-15 °C ~ 60 °C
Operation Humidity	0 ~ 95% (no freeze)
Working Environment	Indoor / outdoor
Flow Rate	30 people per minute
Communication	Dry contact, relay signal
Emergency	Arms will open when power off
Flexibility	Integrate with any access control



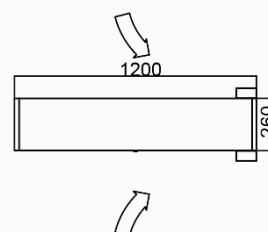
Dimensions



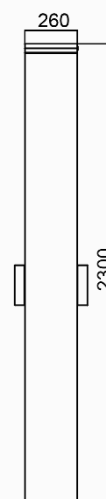
Front View



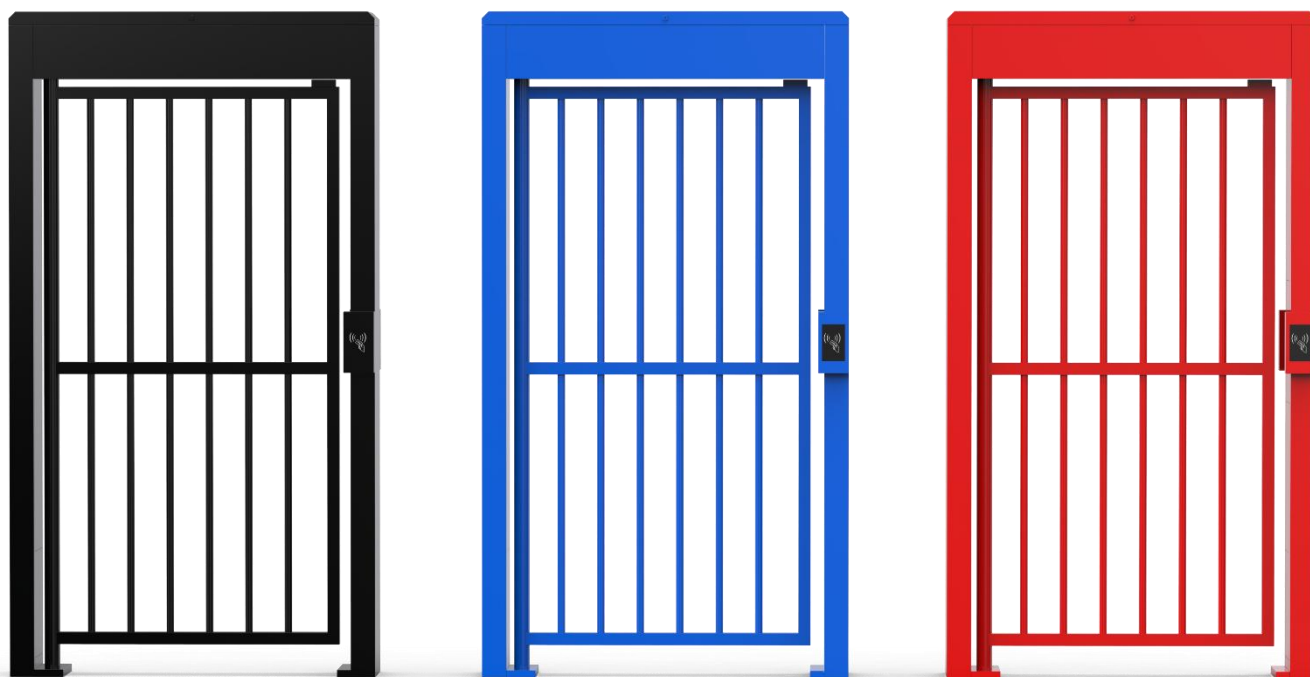
Top View



Side View



Colors Optional



Comparison

Model Photos



Model DSSP6004.

A

B

C

Opening Mode

Manual type

Manual type

Automatic type

Direction of Door Opening

One way

Two ways

Two ways

Electric Lock

×

✓

Motor with clutch

Access Control

×

Support any access controllers

Support any access controllers

Power Supply

×

✓

✓

LED Light

×

×

✓

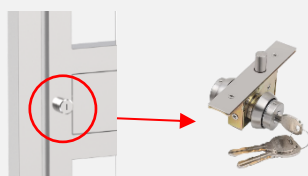
Self Close

×

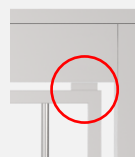
×

✓

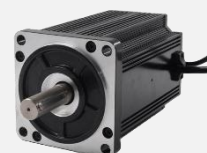
Details



key cylinder



Electric bolt



Motor