



## Model DSSP6003A

### Pedestrian Security Gate (manual lock)

The DSSP6003A is a manually operated, simple type of half-height pedestrian gate, which is unlocked with a mechanical key on the exit sides. It is typically used either independently or in conjunction with a half-height turnstile to regulate access in areas requiring strict traffic control. This combination is the most common and ideal solution for managing access for package deliveries, carts, and individuals with disabilities.

## Features

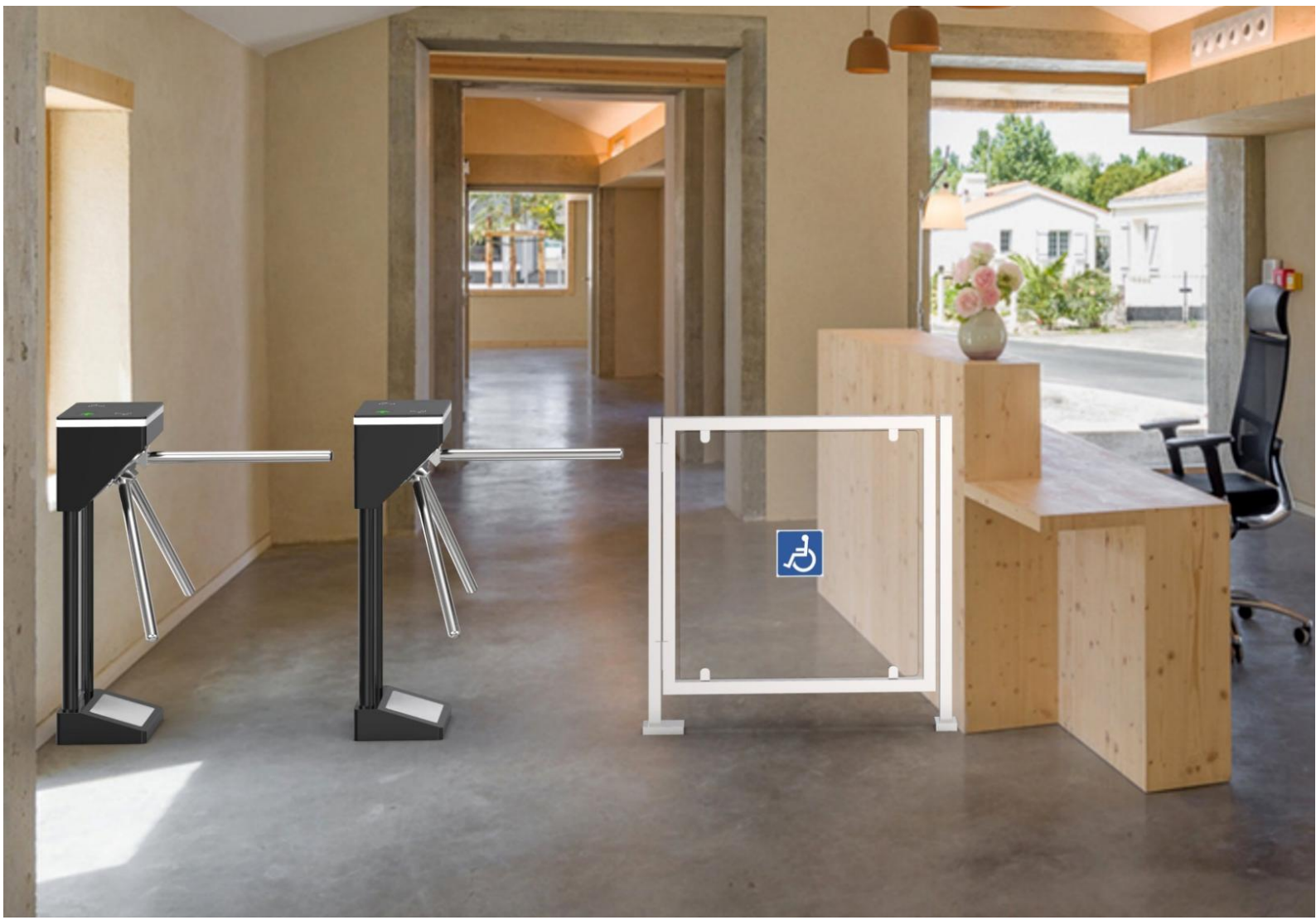
- The direction of door opening: one-way.
- Use keys to control entry or exit.
- 304 brushed stainless steel, durable and antirust.
- IP65 waterproof level, indoor/outdoor use.
- Easy to install and maintain.
- 3 years warranty support.

One way to  
open the door



## Customized Service

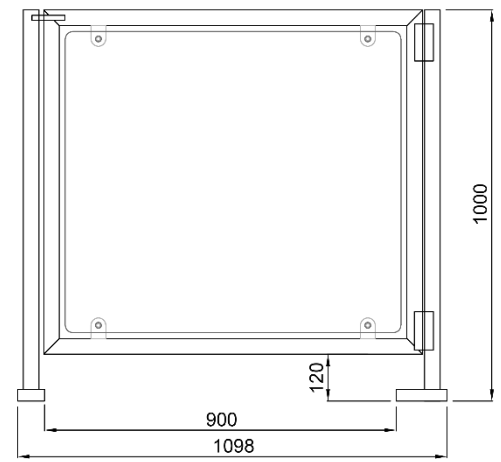
- Material optional.
- Appearance color can be customized based on installation environment.
- Dimensions can be customized to meet your request.
- Logo can be customized.
- Picture: high resolution and scene picture can be customized



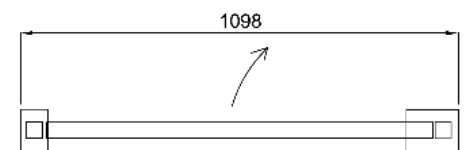
## Specifications

Model No.	DSSP6003A
Type	Manual lock
Brand	Daosafe
Framework Material	304 Stainless Steel + Plexiglass
Dimension	1098 * 1000mm
Net Weight	25kg/pcs
Passage Width	900mm
Passing Direction	Single/bi-directional
Direction of Door Open	One way
MCBF	10 million
Operation Temperature	-25 °C ~ 70 °C
Operation Humidity	0 ~ 95% (No freeze)
Working Environment	Indoor / outdoor
Flow Rate	30 people per minute

Front View



Top View



## Comparison

### Model Photos



### Model DSSP6003.

A

B

C

### Opening Mode

Manual type

Manual type

Automatic type

### Direction of Door Opening

One way

One way

Two ways

### Electric Lock

×

✓

Motor with clutch

### Access Control

×

Support any access controllers

Support any access controllers

### Power Supply

×

✓

✓

### LED Light

×

×

✓

### Self Close

×

×

✓

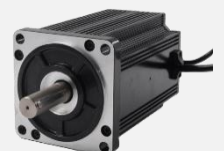
### Details



key cylinder



Magnetic lock



Motor