



Model DSSP6001ABCD

Card/Wristband/Collector Pillar/QR Code

DSSP6001ABCD is an access control machine to swallow card/wristband as a stand-alone unit or integrates with turnstiles to use together.

The body is made of brushed stainless steel which is robust, rigid, anti-rust and durable.

Features

- Lock Structure: up: can open the movement
side: can open collector box
- Stand-alone unit or integrate with turnstile gates.
- Lower power consumption.
- Low noise, system runs smoothly.
- LED indicator display passing status.
- Suitable for indoor/outdoor use.
- Easy to install and maintain.
- 3 years warranty support.

Customized Service

- Appearance color can be customized based on installation environment.
- Dimensions can be customized to meet your request.
- Logo can be customized.
- Picture: high resolution and 3D renderings pictures can be customized



DSSP6001A Card Collector



DSSP6001B Wristband Collector



DSSP6001C Card Solution



DSSP6001D QR Code Solution

Specifications

Model No.	DSSP6001
Type	Wristband/Card/QR/Collector Pillar
Brand	Daosafe
Framework Material	304 Full Stainless Steel + Black Rubber
Dimension	DSSP6001A: 240*150*1000 (mm) DSSP6001B: 360*300*1000 (mm) DSSP6001C: 220*150*1000 (mm) DSSP6001D: 220*150*1000 (mm)
Net Weight	DSSP6001A: 20kg/pcs DSSP6001B: 25kg/pcs DSSP6001C: 20kg/pcs DSSP6001D: 20kg/pcs
Power Supply	AC220V/110V, 50/60Hz
Operation Voltage	24V DC
Power Consumption	40W
Operation Temperature	-15 °C - 60 °C
Operation Humidity	0 ~ 95% (No freeze)
IP Level	IP54
Working Environment	Indoor/Outdoor (with shelter)
LED Indicator	Yes
Optional Model	DSSP6001E, DSSP6001G



LED Indicator



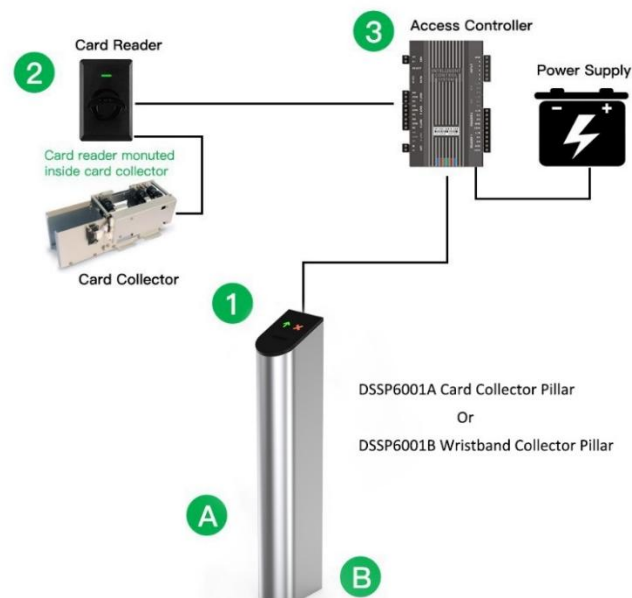
Side Lock Structure

Configuration + Dimensions

Rfid Card/Wristband Collector Pillar Operating Principle

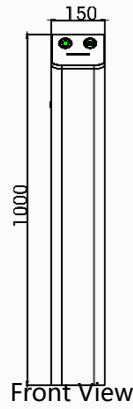
Scenario

1. Card drops to card collector
2. Card reader reads card and authenticate
3. Controller sends relay trigger to indicate
 - A. Out 1 - Access Granted - Cards to accept collector bin
 - B. Out 2 - Access Denied - Cards to reject collector bin

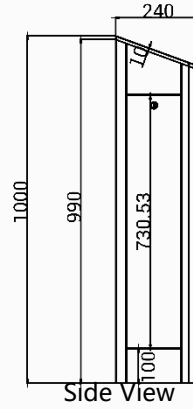




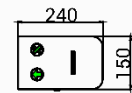
DSSP6001A



Front View



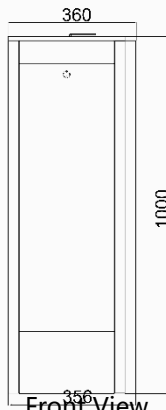
Side View



Top View



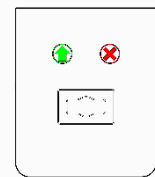
DSSP6001B



Front View



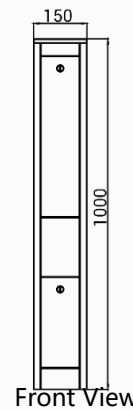
Side View



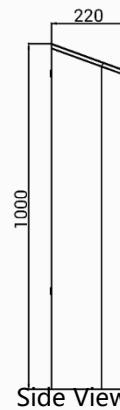
Top View



DSSP6001C



Front View



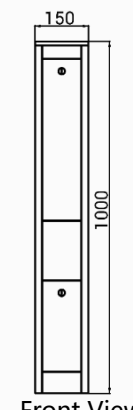
Side View



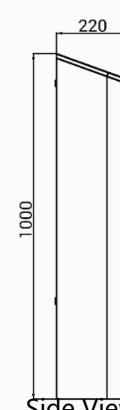
Top View



DSSP6001D



Front View



Side View



Top View