

Model DS-Q10

Tripod Turnstile

QUANTUM DS-Q10 is the most popular tripod turnstile, the most obvious feature is that only one person can pass at one time, highest security to prevent the illegal trailing.

Design with classic black, white color appearance, elegant and timeless pairing, perfect for using at high end applications.

Features

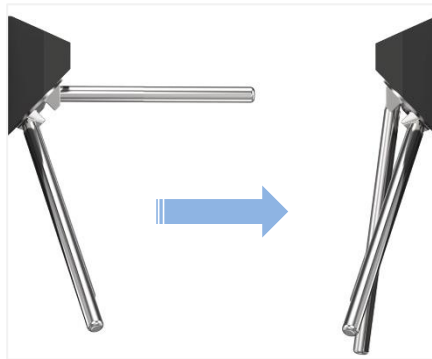
- Two way or one way working.
- Support integrated with any type of access control systems.
- Lower power consumption.
- Low noise, system runs smoothly.
- Green and red LED indicator display passing status.
- IP65 waterproof level, indoor/outdoor use.
- Fire safety requirements, arms drop down automatically.
- Easy to install and maintain.
- 3 years warranty support.

Customized service

- Appearance color can be customized based on installation environment.
- Dimensions can be customized to meet your request.
- Logo can be customized.
- Picture: high resolution and scene picture can be customized



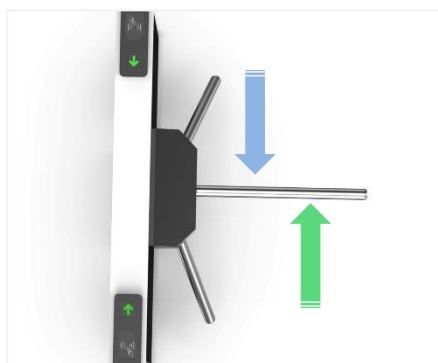
Logo Custom



Arms Drop Down



LED Light



Single/Bi-directional Selectable



Anti-trailing Function: one person can pass at one time

Access Control System

Daosafe turnstile gates can be well integrated with any 3rd party access control systems



Card Solution



QR/Bar Code Solution



Biometric Solution



Remote Control



Touchless Button



Card



QR Code



Fingerprint

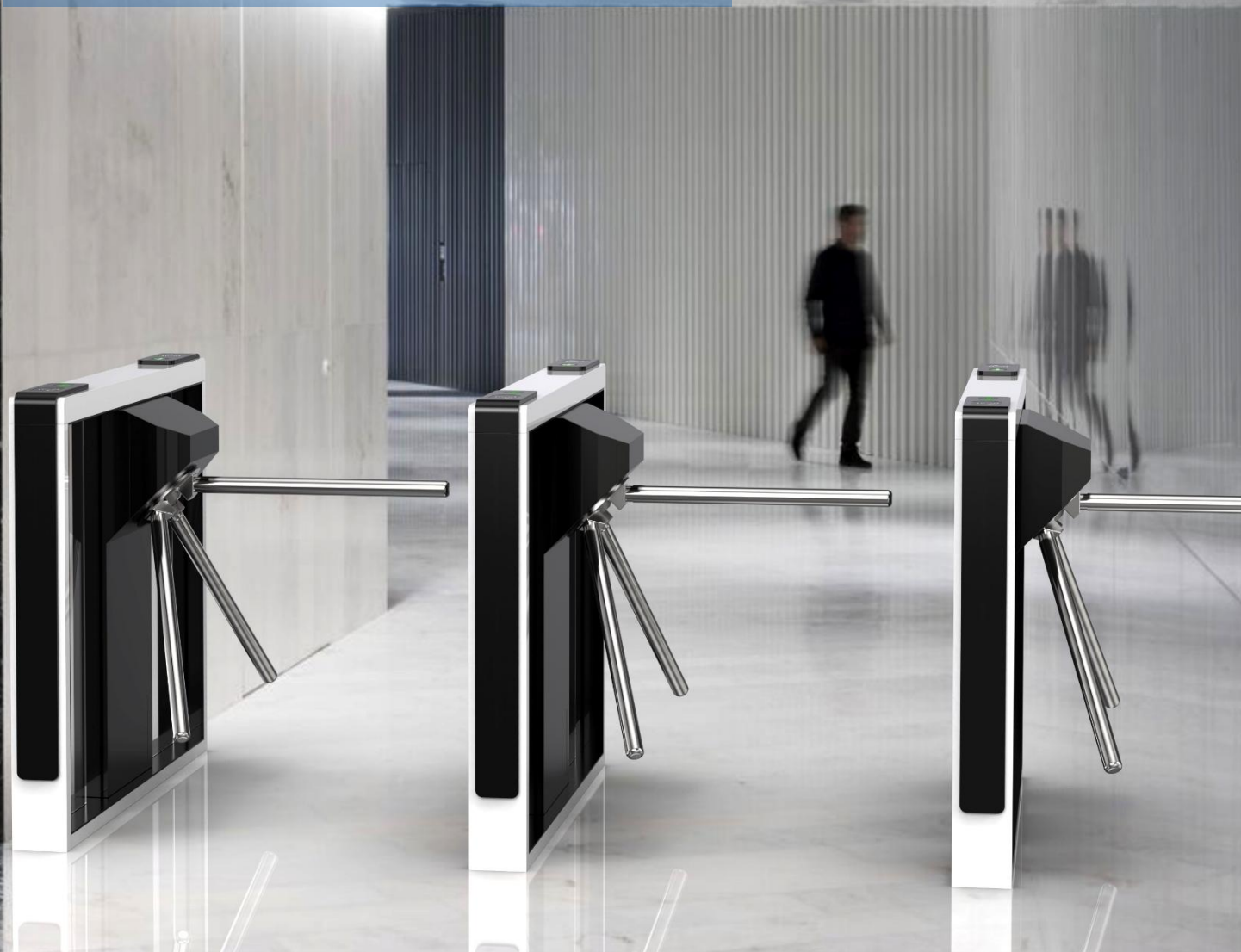


Face



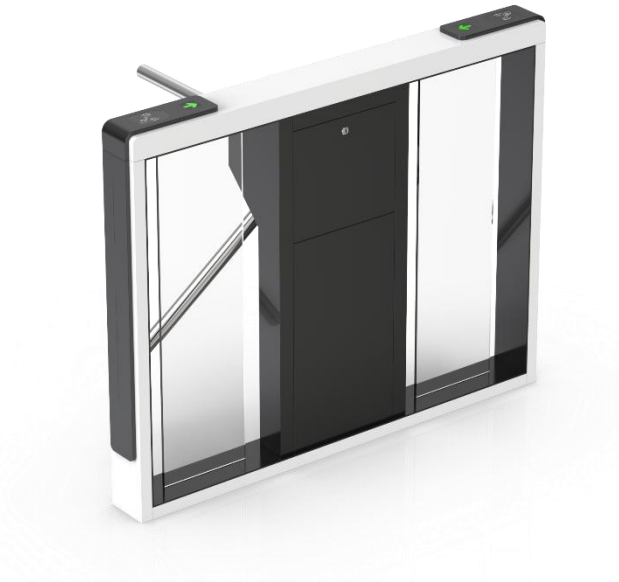
Palm Vein

Three lanes for card solution installed at office building



Specifications

| | |
|-----------------------|---|
| Model No. | DS-Q10 |
| Type | Quantum Tripod Turnstile |
| Brand | Daosafe |
| Certifications | Compliance CE, ROHS, FCC |
| Framework Material | Steel White and black stoving varnish Tempered glass |
| Arm material | Stainless Steel |
| Dimension | 1400 * 120 * 978mm |
| Net Weight | 75kg/pcs |
| Passage Width | 550mm |
| Passing Direction | Single directional / Bi-directional |
| MCBF | 10 million |
| Power Supply | AC220V/110V, 50/60Hz |
| Operation Voltage | 24V DC |
| Power Consumption | 40W |
| Operation Temperature | -20 °C - 75 °C |
| Operation Humidity | 0 ~ 95% (No freeze) |
| Working Environment | Indoor / Outdoor |
| Flow Rate | 40 people per minute |
| LED Indicator | Two LED indicators on top: green → entry, red × no entry |
| Communication | Dry contact, Relay signal, RS485 |
| Emergency | Arms will drop down automatically |
| Flexibility | Integrate with any access control |



Dimensions

