



Model DSN-50P

Portable Turnstile

The most notable feature of portable turnstile is convenience and portability.

It consists of a turnstile, ground plate, railing, and wheels.

It is suitable for various scenarios such as exhibitions, lawns, gardens, construction sites, etc., allowing easy mobility and usage without the need for bolt fixation to the ground.

The product's structure is exceptionally sturdy, making it suitable for installation in any environment.

Features

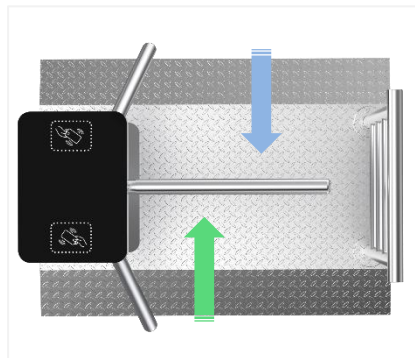
- Two way or one way working.
- Portable, easy to move.
- Support integrated with any type of access control systems.
- Three colors LED Indicator interface: blue for power on, green for valid card access, red for invalid card access.
- When power is off, arms will drop down automatically, which is complying with fire safety requirements.
- RS485 communication interface.
- Easy to install and maintain.
- 3 years warranty support.

Customized Service

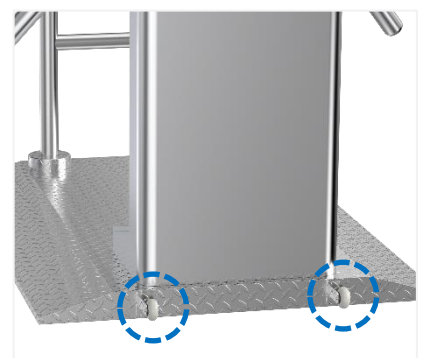
- Appearance color can be customized based on installation environment.
- Dimensions can be customized to meet your request.
- Logo can be customized.
- LED indicator is optional.
- Black rubber protector is optional.
- It can support customized integration of various access control solutions.
- Picture: high resolution and scene picture can be customized.



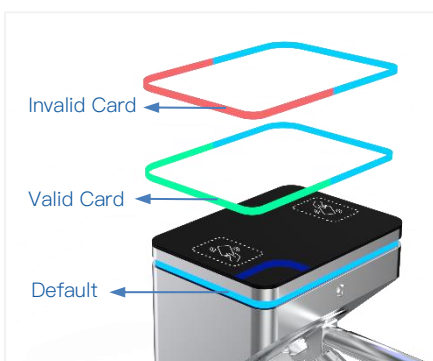
Logo Customization



Single/Bi-directional Selectable



Movable Wheels



Three LED Indicators



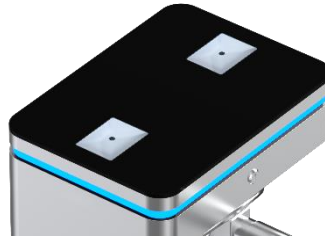
Arms Drop Down



Anti-trailing Function:
one person can pass at one time



Card Solution



QR/Bar Code Solution



Biometric Solution



Remote Control



Touchless Button



Card



QR Code



Fingerprint

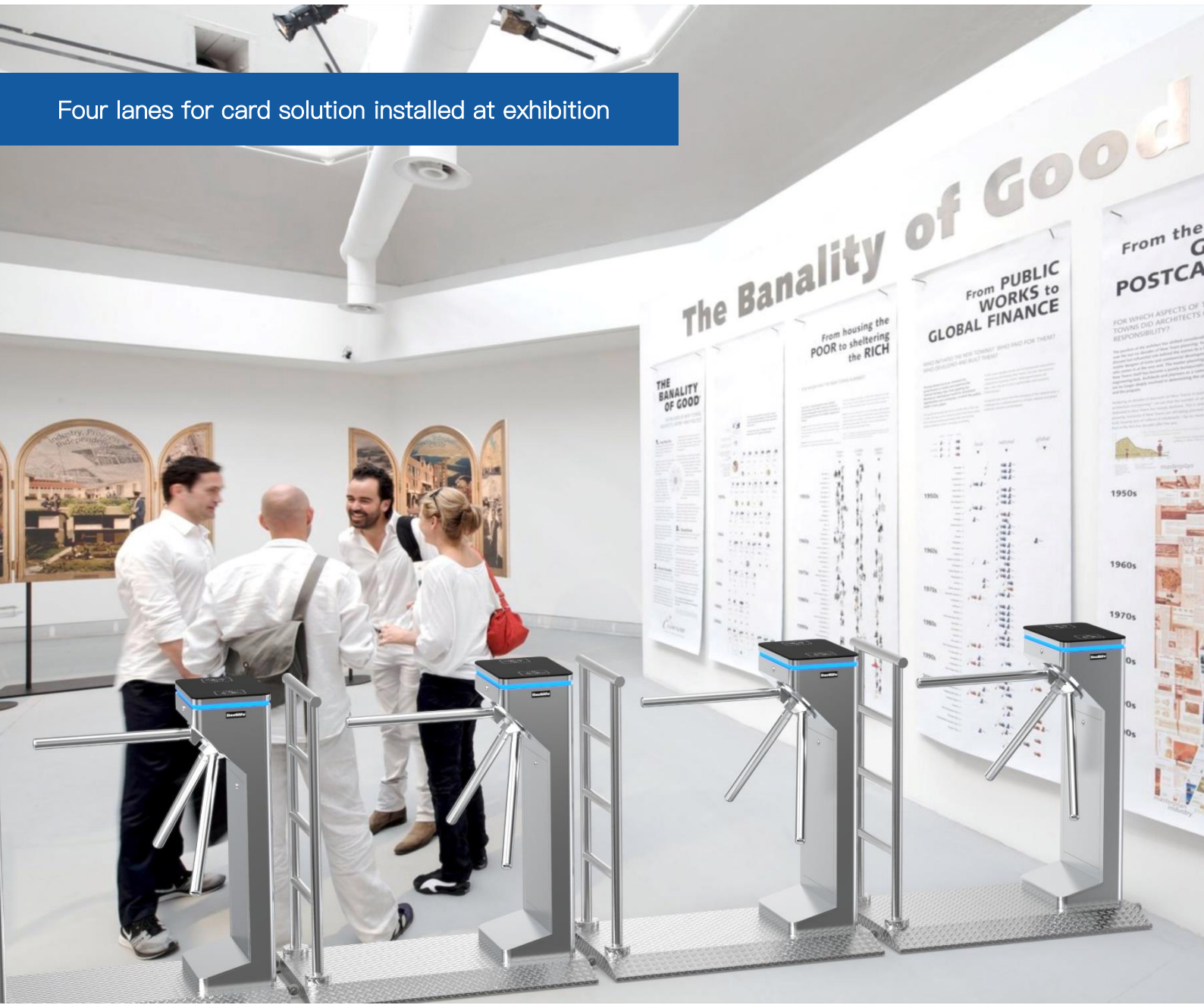


Face



Palm Vein

Four lanes for card solution installed at exhibition

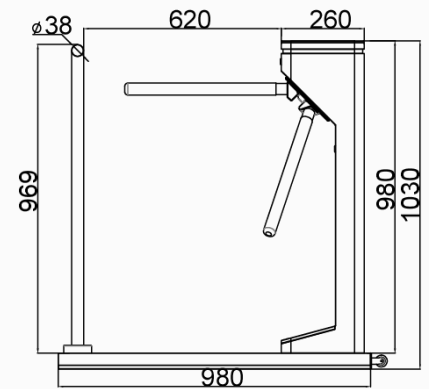


Specifications

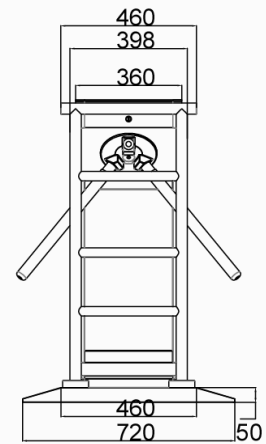
Model No.	DSN-50P
Type	Portable Turnstile
Brand	Daosafe
Certifications	Compliance CE, ROHS, FCC
Framework Material	304 brushed stainless steel High end black tempered film glass
Arm material	304 Stainless Steel (Black rubber protector is optional)
Dimension	Turnstile: 360*260*980mm Base: 980*720*50mm Bar: 460*969mm
Net Weight	50kg/pcs
Passage Width	550mm (Arm length: 500mm)
Passing Direction	Single directional/Bi-directional
MCBF	10 million
Power Supply	AC220V/110V, 50/60Hz
Operation Voltage	24V DC
Power Consumption	20W
Operation Temperature	-20 °C – 75 °C
Operation Humidity	0 ~ 95% (No freeze)
Working Environment	Indoor/Outdoor
Flow Rate	35 people per minute
LED Indicator	Three LED indicators on top: Blue → default, green → valid, red → invalid
Communication	Dry contact, Relay signal, RS485
Emergency	Arms will drop down automatically
Flexibility	Integrate with any access control

Dimensions

Front View



Side View



Top View

