

# WALLBOX TOUCH SERIES

---

MODIFY YOUR EV CHARGER  
SETTINGS AS A CHILD'S PLAY

SET YOUR OWN ACCESS  
CONTROL & PREPAYMENT

CHARGING CAPACITY  
UP TO 22KW

BUILT IN DATA LOGGING  
& WEB REMOTE MONITORING

---



## WALLBOX TOUCH SERIES

Designed for public and private indoor & outdoor car parks, the Wall Box Touch is the new generation of EV charging stations, with new features apart from having the great ones of its predecessor Wallbox Smart.

### Main SPECIFICATIONS



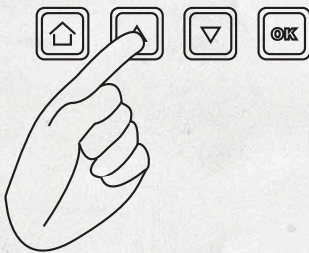
#### Hardware

1-Phase 230VAC -3-Phase 400VAC
Output rated power from 3.7kW to 22kW
Backlight LCD display
RFID card reader for access control & prepayment
Smart metering
TCP / IP Ethernet Port
3G modem (optional)
Socket / 5m tethered cable
Type 2 / Type 1 connector (mode 3)

#### Software

OCPP v.1.2 / 1.5 & XML protocol integration
Embedded SCADA (without backoffice)
Report of charging logs
Alarm notification by email
Enable/Disable charger at different timetable

Also includes a 4-key pad that allows a direct access to the unit setup menu to configure settings



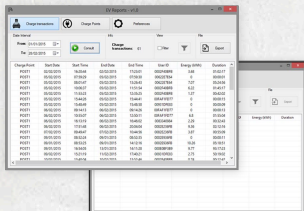
#### Configurable Settings

Master card activation
Output current (16 or 32A)
Date/time
User whitelist for access control / Prepayment
Scheduled or immediate charging process
Energy reading

This way, the Wallbox Touch makes easy to suit the driver's specific needs.

### EV-REPORTS SOFTWARE

Software that allows to make a query of all charge transactions stored in one or more charging points and presents them on a single screen.



#### MAIN FEATURES

Selectable time interval
Filtering options
Export to spreadsheet file
Multilanguage interface
User friendly

### MODELS

Ref	Supply	Power	Charging Voltage	Charging Current	N° sockets	Connector type	Charging Mode
CCL-WBC-TOUCH	1P + N	3, 7kW	230V	16A	1	Type1 tethered cable	Mode 3
CCL-WBC32-TOUCH	1P + N	7,3kW	230V	32A	1	Type1 tethered cable	Mode 3
CCL-WBMC-TOUCH-TRI	3P + N	22kW	400V	32A	1	Type2 tethered cable	Mode 3
CCL-WBM-TOUCH-TRI	3P + N	22kW	400V	32A	1	Type2 (Lock Socket)	Mode 3