



sensing the future



## Herkules 2E

Microwave motion detector  
for industrial doors

**Simple, proven, versatile**

- Quick and easy installation
- Two completely independent programmable outputs
- Quick reaction time is ideal for high-speed doors
- Differentiates between people & vehicles

# Herkules 2E

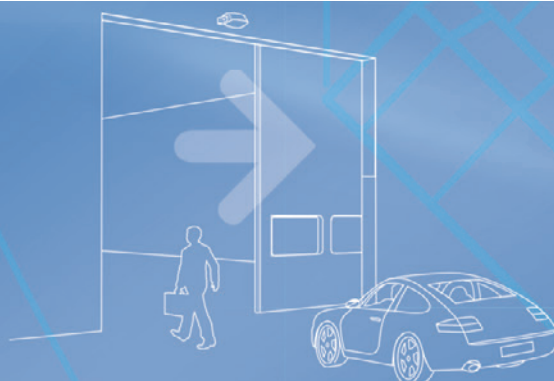
## Microwave motion detector for industrial doors

### Universally applicable

The Herkules 2E microwave motion detector has been specifically developed for use with industrial doors. It detects, differentiates between or masks out people or vehicles. Herkules 2E is a logical further refinement of our successful microwave detectors that are also used for automatic doors. Our long experience, combined with progressive planar technology, gives Herkules 2E a considerable range of functions and reliability.

### User-friendly

Herkules 2E features two completely independent programmable outputs that give you complete flexibility for every application and the pulse on exit feature makes it even more versatile. Herkules 2E is extremely user-friendly and can be easily programmed.



## Your benefits

### Quick installation

- Quick and easy installation: bi-directional remote control and user-friendly settings

### Two outputs

- Two completely independent programmable outputs for endless application scenarios

### Easy installation and startup

- 6-wire cable and thicker wire gauge for easier installation
- 7 m long cable for maximum installation flexibility
- Mounting height range of 2 to 7 m covered by one sensor (no need for multiple sensors at different heights)

### Intelligent control

- Differentiation between pedestrian and/or vehicle traffic
- Detects traffic moving toward and away from the door
- Cross-traffic optimisation prevents unwanted opening

### Indoor and outdoor use

- Operating temperature range of  $-30^{\circ}\text{C}$  to  $+60^{\circ}\text{C}$  is ideal for cold storage applications

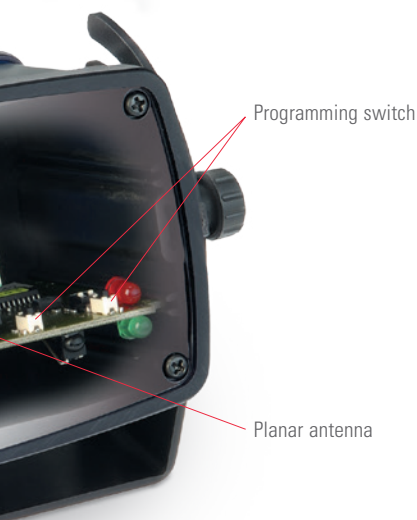
### Door activation

- Ideal substitute for in-ground loops



Pulse on exit signals the door to close after vehicles leave: Protect vehicles & doors, save time, and keep unattended fire stations secure.

The industrial door must be secured with a safety edge / light barrier.



## Extended accessories

The RegloBeam 2 bidirectional remote control allows the Herkules 2E to be configured quickly and completely from ground level, and every single parameter can be adapted to the particular situation. The RegloBeam 2 is also used with many of our other detectors.



RegloBeam 2 remote control



## Reliable in every application

### Situation

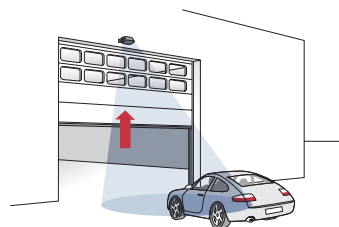
Activation of sectional gates

### Solution

- Optimum traffic flow thanks to reliable activation of the industrial door controller

### Advantages

- Direction recognition means the industrial door only remains open for as long as necessary
- Crossing traffic masking to prevent unintentional opening of the industrial door



### Situation

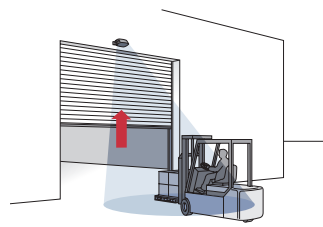
Use on roller gate or high-speed door in logistics areas

### Solution

- Early-stage opening simply by selecting one of five possible field sizes (see back page) and rapid detection of people/vehicles

### Advantages

- Optimum goods flow thanks to early-stage detection and immediate opening
- Even low and wide industrial doors profit from the flexible settings for ideal activation



### Situation

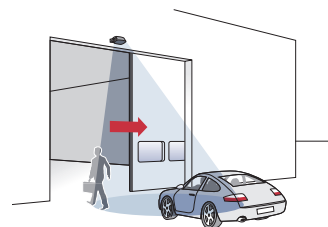
Activation of sliding gates for people and vehicles

### Solution

- Detection of people/vehicles with separate outputs for intelligent activation

### Advantages

- With people detection the industrial door will only open part way.



### Situation

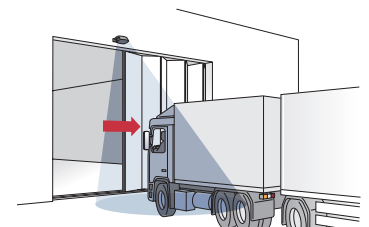
Delivery at folding door with truck

### Solution

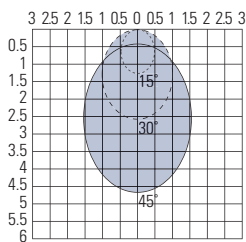
- Also ideal for use on wide and tall industrial doors

### Advantages

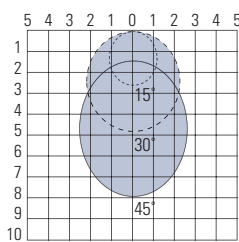
- Reliable detection due to flexible adjustments to the microwave field
- No need for the driver to get out
- Optimum traffic flow thanks to early-stage detection and immediate opening



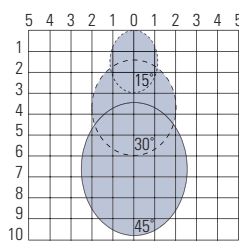
## Maximum field dimensions



**2.5 m mounting height**  
Setting angle 15°–45°



**4.5 m mounting height**  
Setting angle 15°–45°



**7 m mounting height**  
Setting angle 15°–45°

## Order details

Article no.	Description
<b>350849</b>	<b>Herkules 2E</b> Microwave motion detector for industrial doors

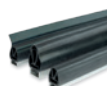


Accessories	
<b>292393</b>	<b>RegloBeam 2</b> Bidirectional remote control



## Supplementary products

<b>ClickLine</b>	Electrical safety edge Rubber profiles with click-fit foot
------------------	---



<b>CoverLine</b>	Electrical safety edge Rubber profiles for clicking in at the side
------------------	---



## Technical data

### Mechanical data

<b>Mounting height</b>	2.0 to 7.0 m
<b>Connection type</b>	cable 7 m, 6 x AWG 26 (0.14 mm <sup>2</sup> )
<b>Housing material</b>	black anodised aluminium, polycarbonate cover
<b>Dimensions</b>	134 x 82 x 75 mm
<b>Weight</b>	820 g incl. cable

### Technology data

<b>Technology</b>	Doppler radar with planar module
<b>Transmitting frequency</b>	24.05–24.25 GHz
<b>Transmitting power</b>	< 20 dBm
<b>Max. detection speed</b>	25 km/h for vehicles

### Electrical data

<b>Operating voltage</b>	10–28 V AC, 12–36 V DC
<b>Operating current</b>	Max. 75 mA
<b>Outputs</b>	Relay
<b>Switching voltage</b>	Max. 48 V AC/DC
<b>Switching current</b>	Max. 0.5 A AC

### Ambient conditions

<b>Protection class (EN 60529)</b>	IP 65
<b>Temperature range</b>	–30 °C to +60 °C
<b>Air humidity</b>	0% to 95% relative, without condensation

### Standards

<b>Approvals</b>	CE 0682 I / FCC / IC
<b>Suitable for the following countries</b>	EU, EFTA, US, CA

### Note

Technical details and recommendations on our products are based upon experience and represent guidelines for the user. Details in brochures and specification sheets do not guarantee any special product features, apart from those which we confirm in individual cases. We reserve the right to make changes as the result of technical developments.

## Your contacts

### Bircher Reglomat AG

Wiesengasse 20  
CH-8222 Beringen  
Phone +41 52 687 11 11  
Fax +41 52 687 12 10  
info@bircher.com  
www.bircher-reglomat.com